



# RESCON INTERNATIONAL

EXCEEDING EXPECTATIONS



## PRODUCTS AND SERVICES FOR INDUSTRIAL APPLICATIONS



# ITT GOULDS PUMPS



WORLD-LEADING BRAND IN INDUSTRIAL PUMPS

## Goulds 3196 i-Frame Process Centrifugal Pump



## Goulds 3171 Vertical Sump & Process Pump

- \*Capacity to 3180 GPM (722 m3/h)
- \*Heads to 344 Feet (105m)
- \*Temperature to 450 F (232 C)
- \*Pit Depths to 20 Feet (6m)

## Goulds IC i-Frame Chemical Process Pumps



## Goulds 3700 Single-stage, overhung Process Pump



## PumpSmart PS 220

PumpSmart PS220 provides the next level in intelligent pumping by using a standard variable frequency drive and directly embedding pump specific algorithms onto the drive. The PS220 drive is a microprocessor based Direct Torque Controlled (DTC) adjustable speed AC drive. Pump specific algorithms combined with the advantage of sophisticated high-performance control of AC motors make it the ultimate variable speed drive solution for any pumping application.



ABB is the leading marketer, designer, manufacturer, and service provider of industrial electric motors and generators. Baldor Electric Company was acquired by ABB in 2011, and became ABB on March 1, 2018. ABB and Baldor-Reliance brand motors range from sub-fractional to 100,000 horsepower and include NEMA, IEC, AC, DC, variable speed, synchronous reluctance, gear, and servo motors.

## Baldor Explosion Proof Motor

- Hz: 50/60
- Voltage: 380/230/460/190
- Phase: 3
- HP: 10



## Cast Iron Motors M2BAX

- Type Designation: M2BAX
- Voltage: 220V-380V
- Mounting type: Bracket B3(IM B3)
- Flange B5 (IM B5)



better together

Our core business is the design, manufacture and distribution of electric submersible pumps for residential and industrial use. Through constant acquisition of new technological know-how and skills our product range is constantly being improved, refined and broadened. We offer a wide range of lifting stations, aeration and mixing products, control and monitoring devices.

## UNIQA

Class H electric motor from 1.1 kW to 355 kW in efficiency class IE3

- 50 Hz and 60 Hz versions
- Thermal protection devices incorporated in stator
- Long life bearings (100,000 hours)
- Discharge from DN50 to DN500
- Operating temperature up to 40°C (up to 60°C on request)



## GREY SERIES

- Three-phase motor from 0.55 to 18.5 Kw
- Insulation: class H (180°C)
- 50 Hz and 60 Hz versions
- Thermal protection devices incorporated in stator
- AISI 431 drive shaft
- Two silicon carbide mechanical seals in large oil chamber
- Discharge from DN32 to DN250



## BÖRGER

is the largest manufacturer of elastomer coated rotary lobe pumps in is the largest manufacturer of EXCELLENCE – MADE TO LAST elastomer coated rotary lobe pumps in the Their core product, the BlueLine rotary lobe pump, is a self-priming, valveless, positive displacement pump available in 21 models in six series delivering flow rates up to 7,500 gpm. the Americas. Their core product, the BlueLine rotary lobe pump, is a self-priming, valveless, positive displacement pump available in 21 models in six series delivering flow rates up to 7,500 gpm.

## BLUEline Rotary Lobe Pump



- Flow rates of 1 - 1,440 m<sup>3</sup>/h (4.4 - 6,400 usgpm)
- Pressure-resistant up to 12 bar (175 psi)
- Available with and without casing protection

## ONIXline Rotary Lobe Pump

- Flow rates of 1 - 135 m<sup>3</sup>/h (4.4 - 595 usgpm)
- Pressure-resistant up to 16 bar (230 psi)
- Highest flexibility when it comes to the sealing



PROTEGO® offers a comprehensive line of flame arresters, valves, and tank accessories that are tailored to meet market demands.

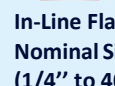
The products are installed for a wide range of applications:

- \*In tank farms for flammable liquids in industrial and military applications
- \*In chemical and pharmaceutical processing facilities
- \*In vapour combustion plants
- \*In biogas, landfill gas and wastewater treatment plants
- \*In shipbuilding; on oil platforms, and in loading and unloading facilities

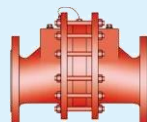
## FLAMEARRESTER



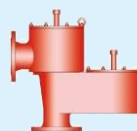
End-of Line Flamearrester  
Nominal Size: 15 to 800mm (1/2" to 32")



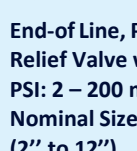
In-Line Flamearrester  
Nominal Size: 10 to 1000mm (1/4" to 40")



## VALVES



End-of Line, Pressure & Vacuum Relief Valve  
PSI: 2 – 200 mbar  
Nominal Size: 50 to 700 mm (2" to 28")



End-of Line, Pressure & Vacuum Relief Valve w/ Flamearrester  
PSI: 2 – 200 mbar  
Nominal Size: 50 to 300 mm (2" to 12")



Flex-A-Seal a leading manufacturer of custom engineered mechanical seals, welded metal bellows and the world's only patented split cartridge mechanical seal.

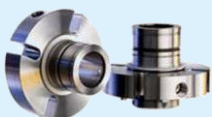
## WELDED METAL BELLOWS



## SINGLE CARTRIDGE MULTIPLE SEAL



## SINGLE CARTRIDGE MULTIPLE SEAL



## DOUBLE CARTRIDGE SEAL



## HEAVY DUTY SLURRY SEAL

### Turboflex High Speed Couplings

is capable of transmitting high torques at high speed whilst accepting considerable levels of angular radia, and axial misalignment.



### G-flex-Grid Couplings

- Torque range up to 1,500,000 in lb. (169kNm)
- Easy to assemble/ replace
- Coupling sizes 1020 through 1140 in-stock in a range of standard bore sizes.



### Torsiflex Pump Couplings

are specifically designed for the process pump and general industrial markets.



manufactures engineered hose assemblies that are designed and integrated with a valve in each end fitting.

Braids: 304 Stainless Steel - Braids: 304 Stainless Steel - Single Double (upon request)  
Construction: P4 Series, Annular/Standard Pitch  
Series 700: Annular/Standard Pitch  
Tube: 316L Stainless Steel  
Cover: SS Armor Available Single

### Hose Data



Double (upon request)  
Construction: P4 Series, Annular/Standard Pitch  
Series 700: Annular/Standard Pitch  
Series 800: Annular/Close Pitch  
Series 900: Annular/Close Pitch  
Tube: 316L Stainless Steel  
Cover: SS Armor Available

# SPXFLOW

has fully integrated the additions to its mixing solutions portfolio, creating a bigger, more technologically advanced offering for customers. Combining these legacy companies and brands offers customers access to the best solution across all brands.

## Bran+Luebbe

### Cerex Metering Pump

- API 675 compliance
- Hydraulically actuated double PTFE diaphragm
- between approx. 30 and 6000l/h



## Lightnin

### ECL Small Portable Mixer

-The Enhanced Classic Line (ECL) mixer gives our customer an even stronger and more flexible product. Never before has there been a range of mixers offering so much quality and value.

## APV

APV, an established centennial engineering legacy, is an important part of the SPX Flow brand, integrated over a decade ago.

Addressing the food/ beverage, dairy, pharmaceutical and healthcare markets, APV offers highly effective turnkey automation and process engineering solutions.



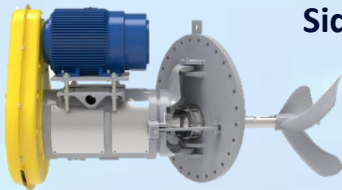
### Plate Heat Exchanger

APV heat exchangers are known for their reliability, performance, and quality. They incorporate innovative design features and cutting-edge technology to enhance heat transfer efficiency, while also focusing on energy savings and reducing operational costs.

## PHILADELPHIA

### Side Entry Mixing System

Our BSER side entry mixer drive combines with our Forward Rake Advanced Pitch Propeller that creates a collimated flow for optimal BS&W (bottom, sediment, and water) control, faster blending, and energy efficiency.



### Centrifugal Pump – W+ Series

The W+ pump series is based on a proven hydraulic design that promotes high operational efficiency and reduces noise and vibration levels while maintaining hygienic standards.

## PLENTY

### Belt or Gear Drive for Blending

Plenty side entry mixers for blending, homogenizing and temperature uniformity duties



### Homogenizer

The APV Homogenizer Group designs and manufactures high-pressure homogenizers (operating pressures up to 29,000 psi (2,000 bar) for the processing of emulsions and dispersions.

### Rannie & Gaulin



is a leading global provider of pressure relief and explosion protection solutions, with a heritage in the USA and UK going back decades. Our purpose is "Protecting Life. Solutions for a safer, cleaner world". This purpose is deeply embedded in our culture, and we purpose is deeply embedded in our cultur, and we specialize in manufacturing rupture disc, explosion vents and associated burst detection systems to protect people, plant and the environment.

Our services encompass bespoke engineering and design consultations, comprehensive product training, site surveys and a stock consolidation program. Serving a diverse global clientele, our operational excellence is backed by two state-of-the-art manufacturing centers in Broken Arrow, Oklahoma (USA) and North Shields, UK. These are supported by six regional offices and over sixty approved representatives worldwide.

## Pressure Relief Solutions

### High-Performance Rupture Discs

Engineered with the latest manufacturing technologies, our high-performance products minimize disruptions to processes and provide safer, cleaner solutions. They protect people, assets, and the environment while allowing plant operators to improve safety, reduce downtime, and cut operational costs.

Our industry-leading Opti-Gard offers an unbeaten 3% tolerance with a 95% operating ratio, while the FAS and LoKr discs offer the lowest K value of any disc on the market.



### Non-Invasive Burst Detection

Our innovative Flo-Tel 2 sensor is the only truly non-invasive sensor on the market. Thanks to an innovative magnetic detection system, it eliminates leak paths, and is unaffected by downstream pressure fluctuations or corrosion. No re-wiring is needed after disc activation, and the sensor offers long-term cost savings as it can be re-used.





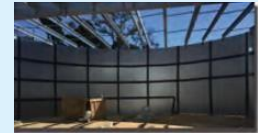
Established in 1893, CST Industries specializes in Storage Tanks and Covers. Over 250,000 Tanks and 16,000 Covers installed in 125 countries.

<https://www.cstindustries.com>

CST Storage is the largest provider of Factory Coated Bolted Storage Tanks for dry and liquid storage applications in municipal, industrial and agricultural markets.

CST Storage offers the only complete product line of advanced tank coatings-Vitrium glass-fused-to steel under the brand names Aquastores, Harvestore, and Slurrystore and OptiBond Epoxy coating system Columbian TecTank (CTT).

### Cylindrical Galvanized Tank



CST Storage provides custom designed aluminum structures and covers for industrial, commercial, recreational, transportation and other applications.

CST Storage is the worldwide leader in designing, manufacturing and constructing custom aluminum covers, domes and roofs

#### OptiBond Epoxy Coated Tank



#### Glass-Fused-to-Steel



#### Advantages

- Highest Quality Finish
- Never Needs Painting
- Minimal Maintenance Required
- Will not corrode or rust
- Can handle larger volumes
- Cost-effective and longer tank life

#### APPLICATIONS



Bioenergy



Waste Water



Fire Protection



Portable Water



Power Generation



Petrochemical-Oil and Gas



#### Aluminum Dome Cover

Korea Float's AL. Dome cover provides environmental efficiency, protects stored products and reduces maintenance costs. Its reputation is built on its economic budget, light weight, and simple installation.



#### Internal Floating Roof

Many companies in petroleum and tank terminals throughout the world have turned to Korea Float's internal floating roof for its superior design and efficiency. Its long-life cycle, excellent emission control and no maintenance cost are what it is known for worldwide. Korea Float's design and manufacturing method meets API standards and specified national codes and regulations worldwide



## RESOURCES CONSOLIDATED INTERNATIONAL TRADING, INC.

AGS Building, 446 EDSA Guadalupe Viejo, Makati City

(+632) 8403-8934 (+632) 8425-8957

(+632) 8519-1417

(+63) 9176764508 (+63) 9478939493

rescon@arcegroup.net / sales@arcegroup.net



EXCEEDING EXPECTATIONS